



## CHARLEVILLE CBS SECONDARY SCHOOL

**Below is a list of some of the measures that CBS, Charleville has currently in place or is working on in preparation for our return to school at the beginning of September.**

### **Covid - 19**

We would ask all parents and students to familiarise themselves with Covid-19 symptoms:

- High temperature
- Shortness of breath
- Breathing difficulties
- Cough

### **FIRST DAY**

#### **Where should my son go on the first day of school?**

On the 1st day of school, all students should proceed to the **Assembly Point A** & not enter the main building of the school. Staff will be on hand to assist you.

#### **Am I allowed to bring my son into school?**

This is most likely with new first year students who are nervous and new to the school. This is a new adventure and it can be daunting. However, parents can only be on the school premises for a meeting which has been scheduled through the school office.

#### **Can I pay the registration fee on this day?**

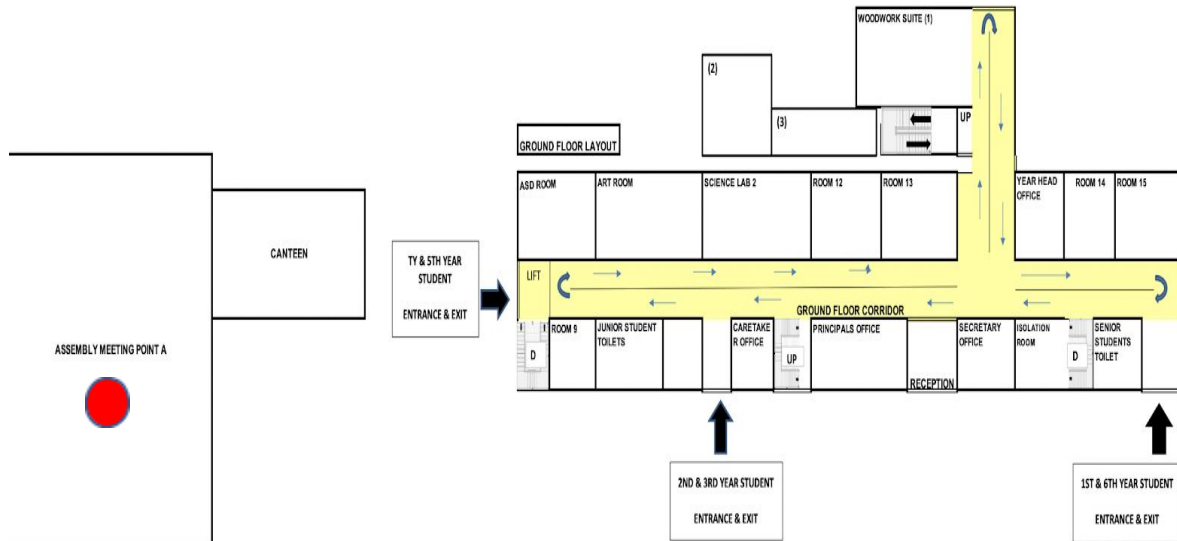
Yes. Students can pay the registration fee on the first day. In order to do so we would ask parents to place the money / cheque in a sealed envelope with the student's name, year group and amount.

#### **Do I have to wear a face mask or visor?**

Yes. Students will not be allowed to enter the building without a face covering. All students will be given a pack with face masks on arrival. If there is a medical reason why students cannot wear a mask or visor the school needs to be informed asap. Please contact us on 06381789.



## CHARLEVILLE CBS SECONDARY SCHOOL



**Will teachers be wearing a mask/visor? Yes.**

### **What if I refuse to wear a face mask?**

If a student refuses to wear a mask, they will have to be collected from school and taken home as they will be in breach of the return to school safely guidelines. All breaches of school rules around covid compliance will be treated very seriously.

### **Do I have a locker?**

At the start of the year students will not have a locker. We have had to make substantial operational changes in the school and to our timetable to safely facilitate all our students on their return to school. We would like to see these changes in practice before we use lockers. We understand that this is not ideal, and that it will require better organisational skills from our students. If students are moving from one class to another they will have to bring their bag with them.

### **Am I wearing my school uniform?**

Yes. Students will be wearing the full school uniform. The Department of Education in their guidelines make no reference for the need for uniforms not to be worn to school. The school uniform is an important part of our identity and creates a sense of belonging and normality.

### **What will the classroom look like?**

Each classroom will be set up to meet social distance guidelines –  
The teacher's desk will be at the top of the room.

There will be hand sanitizer inside each classroom, and also spray bottles and tissue paper to clean the desk and chair when you are leaving and entering the classroom.



## CHARLEVILLE CBS SECONDARY SCHOOL

### Will my classroom be cleaned every day?

Yes. Every classroom will be cleaned every day. Good hygiene is essential in our battle to suppress the virus.

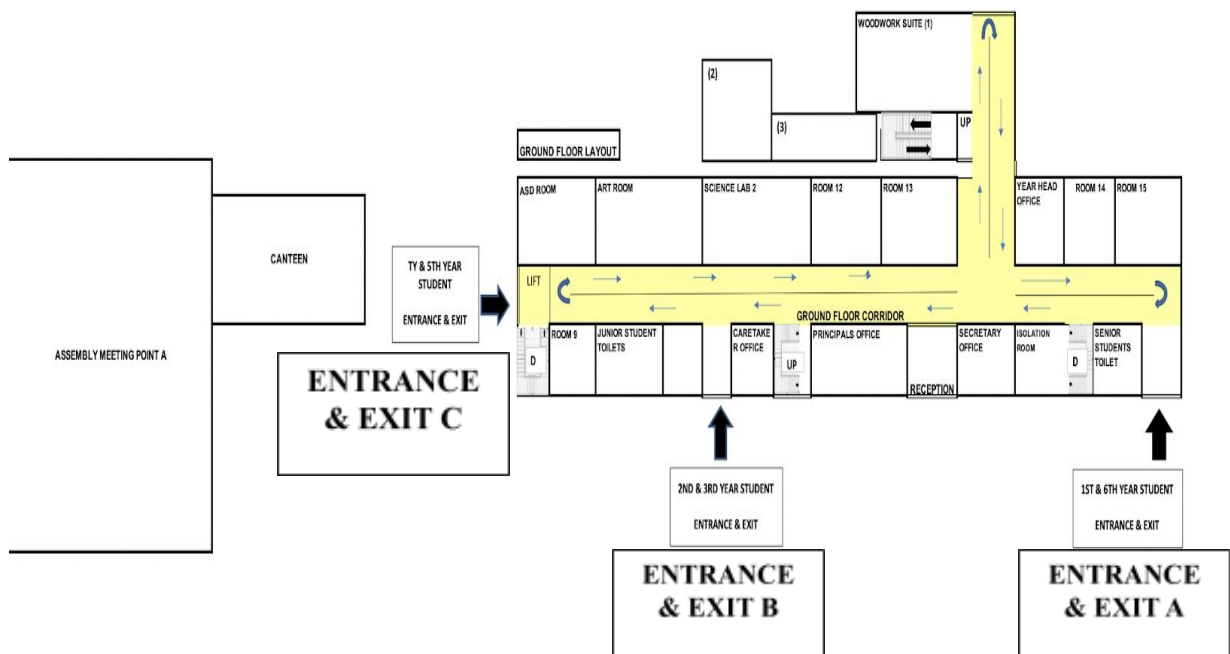
### Can I exit through any door?

No. Students will exit each day through the same door assigned to enter the school each morning (listed below).

**Exit A** – 1<sup>st</sup> Year & 6<sup>th</sup> Year Students

**Exit B** – 2<sup>nd</sup> Year & 3<sup>rd</sup> Year Students

**Exit C** – TY & 5<sup>th</sup> Year Students



### Can I bring my own lunch?

Yes, and we would encourage students to pack a healthy and nutritious lunch. Lunchboxes need to be washed every evening.

### Where do I enter & exit the building?

Students will enter and exit the building at the assigned point.

**Entrance & Exit A** – 1<sup>st</sup> Year & 6<sup>th</sup> Year Students

**Entrance & Exit B** – 2<sup>nd</sup> Year & 3<sup>rd</sup> Year Students

**Entrance & Exit C** – TY & 5<sup>th</sup> Year Students

**'Walk on the left' protocol on corridors**



## **CHARLEVILLE CBS SECONDARY SCHOOL**

This means that every student walking must walk on their left hand side of the corridor. This will create a two way system for student/staff traffic which will maximise the distance apart as we pass each other on the corridor. Keep 1 metre behind any person in front of you on your left hand side where possible.

### **Where do I go for my break / lunch times?**

Each year group will have a specified area where they may spend their break / lunch time. Year groups will not be allowed to mix during break / lunch times.

**Is there a canteen?** Yes. There will be a pre-ordering process in place. Further details will be provided to students during the first week.

Small break will now be staggered. First, Third and TY students will have their small break from 10.20 to 10.35 a.m.

Second, Fifth and Sixth year students will have their small break from 11.00-11.15 a.m.

Lunch will be at the normal time for all students 1.15-1.50 p.m. Senior students (TY, 5th and 6th year) will still be permitted to take their lunch break off the premises.

### **Will there be After School study?**

Hopefully. We would hope that after school study will take place as usual. It may take a number of weeks before it is up and running. This will be in line with public health guidelines.

### **Feeling unwell**

**Should I come to school if I am feeling unwell?** No.

If you are exhibiting any Covid-19 symptoms, please contact your GP immediately and follow the guidelines provided by the HSE.

Please contact the school promptly in the morning to inform us of any significant illness.

### **I don't feel well during the day - what should I do?**

If a student is unwell they should speak to a teacher, their tutor or their year head. In the current climate, we would ask students to do this quickly and quietly.

### **What will happen if I feel unwell?**

Your year head, or the Deputy Principal/Principal will contact your parents/guardians. You will be taken to a designated isolation area to wait for their arrival.

On arrival, parents will make their presence known to the administration office.

All HSE guidelines will be followed and we will communicate with the parents of all



## CHARLEVILLE CBS SECONDARY SCHOOL

students providing the relevant advice.

Arrangements will be made for appropriate cleaning of the isolation area and work areas involved.

### **What do I do if someone in my house has Covid-19 symptoms or if they have come into contact with someone who has suspected Covid-19?**

To ensure the continued running of school we would ask parents to exercise caution in situations like this and not to send your son to school. Please refer to the information sheet on our website for guidance [LINK TO WEBSITE](#).

### **Contact**

#### **Who do I contact in school?**

This depends on the situation. If it is a general question in regard to school then the first port of call is the administration office 063 81789 or [charvillecbs@gmail.com](mailto:charvillecbs@gmail.com). If you have a question in relation to a subject, or are concerned about your son in relation to a specific subject then you contact the subject teacher. This can be done by contacting the admin office. If you have a concern about your son, issues like bullying, anxiety, stress you should contact their year head.

For more serious issues, you may need to contact the Deputy Principal Mr. McSweeney.

#### **Can I make an appointment?**

Yes. All appointments will have to be made through the administration office, we have limited space in reception and we ask that in the new school year anyone who has rang the office and arranged an appointment to follow the Covid-19 guidelines. All visitors to the school will have to sign the COVID-19 log for contact tracing purposes.

#### **Can I drop something into the office?**

No. Parents are not permitted to enter the school. This includes bringing messages, equipment or food to students.

Please follow our Twitter or Facebook page for regular updates

<https://twitter.com/CBSCharleville>

<https://www.facebook.com/cbscharleville1>